

Nordhavn 43 Cayenne



JMYS

Jeff Merrill Yacht Sales, Inc. | www.JMYS.com
3010 Old Ranch Parkway, Suite 440 | Seal Beach, CA 90740

Florida address: Jeff Merrill Yacht Sales, Inc. | 3321 S.E. 14th Avenue | Ft. Lauderdale, FL 33316



Cayenne

Price: \$599,000.00

Location: Ensenada, MX

Jeff Merrill Yacht Sales, Inc. © 2021 All Rights Reserved www.JMYS.com

Nordhavn 43 Cayenne

INTRODUCTION:

Cayenne is hull number one of the extremely popular Nordhavn 43 series. The Nordhavn 43 was developed after the 2000-2001 Nordhavn 40 Circumnavigation and was designed to replace the legendary Nordhavn 46. PAE/Nordhavn created the Nordhavn 43 as a two stateroom, two head, owner operator trawler for long distance cruising.

Cayenne's profile is striking with her flybridge and paravane rig. Like many important adventure cruising aspects, she has built in redundancies. There are two forms of propulsion: her keel cooled, dry stack exhaust Luger main engine and a Yanmar v-drive wing engine. For stabilization – paravanes and active fins. AGM batteries with an inverter and a charger. Two voluminous fiberglass fuel tanks with sight glasses. For comfort and convenience, a robust Northern Lights generator and air conditioning. You'll enjoy Vitrifrigo and SubZero refrigeration/freezing. A combination laundry appliance will keep your clothes fresh and a durable watermaker is installed to replenish your fresh water needs.

The saloon and galley comprise the entry level. The saloon has a great view through the outboard window with seating on both sides and storage underneath the settees. The large custom table is wonderful for dining. There is a three-burner propane stove in the galley, refrigeration, microwave oven, trash compactor and numerous lockers and drawers.

Cayenne's pilothouse features a Stidd helm chair directed to an efficient and organized layout of navigation and communications controls. You will appreciate quick access to breakers, engine controls and other vessel essentials. This pilothouse is a popular gathering spot with the settee aft and ideal for taking in the view ahead from the inside.

The lower level has the guest stateroom forward with three single berths, solo to starboard and over under bunks to port - all connecting to a shared head with toilet, sink and shower. The owner cabin is aft where it is a softer ride at sea and has an ensuite shower, fresh water head and medicine cabinet above the sink.

The machinery spaces are divided with the lazarette aft and entered through the cockpit hatch. The engine room is spacious enough to move about for inspections and routine maintenance.

On deck you will appreciate the extended swim platform when arriving by dinghy. The cockpit has boarding access from three sides. The starboard side deck allows for safe outside travel between the cockpit and pilothouse. A classic Nordhavn Portuguese bridge fronts the pilothouse and has a gate to the foredeck to facilitate managing your ground tackle. The boat deck is accessed from the port side and the RIB is mounted aft and athwartships. The mast supports the main exhaust column and has a rotating boom with electric winches for dinghy launching and paravane outrigger retrieval. Up three short steps you enter the flybridge with two helm chairs, navigation displays and a protective Bimini above.

Nordhavn 43 Cayenne

SPECIFICATIONS:	
MODEL YEAR:	2004
HULL NUMBER:	1
HULL COLOR:	White gelcoat - blue stripe
DECK:	White deck with gray nonskid (gelcoat)
REGISTRY:	United States Coast Guard documented
DESIGNER:	Jeff Leishman
BUILDER:	South Coast - Taiwan ROC
HULL MATERIAL:	Solid fiberglass
DISPLACEMENT:	54,540 LBS. 24,790 KG
BALLAST:	4,000 LBS. 1,820 KG
SPEED:	Cruise 7.8 knots. Top 7.8 knots.
RANGE:	2,800 miles at cruise speed - 7.8 knots (S/L 1.12)
LOA:	43'9" 13.11 M
LWL:	38'4" 11.68 M
BEAM:	14' 10" 4.52 M
DRAFT:	4'11" 1.5 M
AIR DRAFT:	Approximately 32' 9.21 M with mast up. Note: Mast has hinge on base, air draft profile can be lowered to 18' 5.49 M
A/B RATIO	1.875:1
D/L RATIO	425
CP - PRISMATIC COEFFICIENT	0.59
ENGINE	Lugger model LP668D 105 BHP@ 2,200 RPM (Hours~ 6,427 March 2021) Morse dual lever control ZF W220 3.96:1 marine gear
PROPELLER / SHAFT	2" Aquamet 17 shaft 4 blade 32 x 24 bronze propeller
MAIN EXHAUST:	Keel cooled, dry exhaust. Fernstrum grid cooler.
WING ENGINE:	Yanmar model 3GM30FV 24 BHP Morse T-handle "stick" controls Kanzaki KM3 V-drive transmission (Hours ~50 March 2021) 1" 304 SS shaft Martec 2-blade folding propeller
THRUSTER:	Side Power 8 HP electric bow thruster (5 blade)
STABILIZATION:	Naiad 252 Mulitsea II hydraulic active fin stabilizers Paravane outriggers for underway and at rest stability

Nordhavn 43 Cayenne

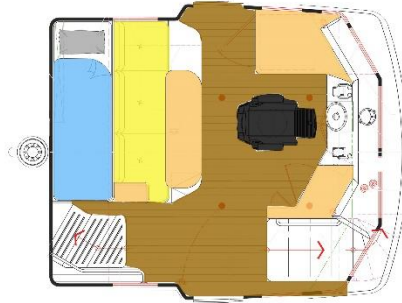
ELECTRICAL:	60 Hertz – US style – 30-amp
SHORE POWER:	30-amp for house and 30-amp air con
GENERATOR:	Northern Lights 8kW generator Model PX-308K1 with sound shield Lugger Model M753K (~3,437 hours March 2021)
INVERTER/CHARGER:	Magnum 3,000-Watt inverter/charger Xantrex 1800 pure sine inverter for TV (inoperable)
BATTERIES:	Lifeline AGM (8) House and Start Batteries (5) 8-D and (1) 4-D batteries in lazarette, (2) 8-D batteries below guest cabin
INTERIOR LIGHTING:	Low voltage LED lighting upgraded
CLIMATE CONTROL:	Cruisair reverse cycle HVAC: 48,000 BTU (3) compressors
MACHINERY EQUIPMENT:	Reverso oil changer for main engine, main transmission, wing engine, wing transmission and generator Racor Duplex for main Walbro fuel transfer pump with Racor filter
WINDLASS:	Maxwell VWC 3500 vertical electric windlass
GROUND TACKLE:	50 KG Bruce anchor with 400' 3/8" HT chain
MAST AND BOOM	Forespar mast and boom for dinghy with electric winches
TENDER AND OUTBOARD:	Highfield CL310 10'5" aluminum hull, inflatable dinghy with seat and steering console 15HP Honda outboard with electric start (All new 2018)
NAV/COM BRANDS:	Furuno Icom
ENTERTAINMENT:	Fusion 650 stereo in pilothouse with speakers and 32" Samsung flat screen TV (All new 2020) Owner flat screen television (inoperable)
STATEROOMS:	Two: Owner amidships, Guest forward
BEDDING:	(Owner) amidship with custom mattress (2019) (3) single berths with foam mattresses forward guest stateroom Pilothouse watch berth with pull out Port settee in saloon has pull out
HEADS:	Two: Raritan Atlantes A5F12 freshwater toilets (electric freshwater)
HOT WATER:	Seward S1100 11-gallon water heater tank

Nordhavn 43 Cayenne

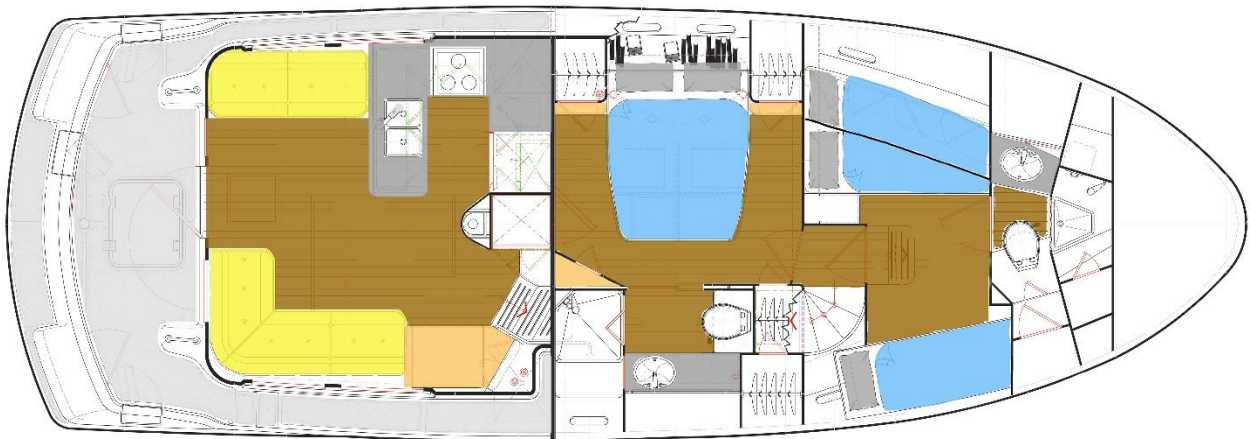
SHOWERS:	Three: Stand up in owner head with door stall in guest head with curtain Cockpit shower
LAUNDRY:	Splendide model WD2100XC combination clothes washer/dryer, vented
GALLEY:	Seaward Princess Gourmet II three-burner propane stove and oven with broiler GE Profile microwave oven GE Monogram trash compactor SubZero refrigerator with teak face in galley SubZero refrigerator/freezer (ice maker) in stairs to pilothouse Note: (2) Vitrifigo stainless steel refrigerator/freezer drawers in pilothouse.
INTERIOR WOOD:	Light Teak
INTERIOR COUNTERS:	Granite counters
INTERIOR UPHOLSTERY:	Ultraleather
INTERIOR FLOORING:	Teak and Holly hardwood throughout (covered with carpet)
BILGE PUMPS:	Three: (1) Flojet electric, (1) Rule 3700 electric high water bilge pump (1) Edson manual
TANKAGE: (approx.)	
FUEL:	1,200 gallons 4,542 liters (Two fiberglass primary tanks, one aluminum supply tank, one aluminum wing engine supply tank)
HOLDING BLACK:	50 gallons 189 liters (One fiberglass tank)
HOLDING GRAY:	50 gallons 189 liters (One fiberglass tank)
FRESH WATER:	180 gallons 681 liters (Three tanks, saddle tanks unusable)
SAFETY:	Sea-Fire engine room fire suppression system USCG safety package EPIRB Viking RescYou Pro 4-person offshore life raft High water bilge pump and alarm
PHOTO DATE:	Most photos taken January 2021
Note: All information is believed accurate but should be verified.	

Nordhavn 43 Cayenne

Layout: Raised Pilothouse



Layout: Main and Lower Deck – Saloon, Galley, Staterooms and Heads



ACCOMMODATIONS and LAYOUT:

The Nordhavn 43 is a full displacement trawler with proven ocean crossing capabilities. The performance aspects have been designed for functionality, utility and reliability. The interior features finely crafted teak joinery, granite countertops balanced with white laminate inserts with teak and spruce soles. You will appreciate the placement of windows and lighting for visibility as well as hatches, portlights and dorade vents for air circulation. The interior includes air conditioning for climate control. The layout aboard **Cayenne** has a pleasing, natural flow transitioning from one area to the next.

Nordhavn 43 Cayenne

SALOON: The saloon is entered through a Dutch door. The saloon and galley make up the entry level. There are settees on both sides of the saloon for sitting (and sleeping). The teak and spruce wood soles are covered by indoor/outdoor carpet squares. There is a drop-down access floor hatch to the engine room. Flat screen television port aft. Forward locker by pilothouse stairs houses the Splendide laundry appliance. The interior accommodations are air conditioned.



- Dutch door entry from the cockpit
- Upholstered settees with storage underneath
- Manual activation pull for engine room fire suppression
- Carpet protection over teak and spruce wood floors
- Opening and fixed windows outboard on both sides
- Flat screen television wall mounted aft port corner
- Stereo system for listening to music
- Forward locker for laundry appliance
- Splendide 2100XC combination clothes washer and dryer (vented overboard)
- Teak storage racks
- Teak dining table with starburst pattern (includes protected cover)

GALLEY: The galley is forward to port and simultaneously spacious and compact enabling easy meal preparation and stable cooking. Essentials include refrigeration, freezing, propane stove and oven, microwave, trash compactor and double basin sink. Storage lockers and drawers stow all of the galley utensils, plates, bowls, mugs and glass ware.

Nordhavn 43 Cayenne



- Seaward Princess Gourmet II (3) burner stove top with oven
- Xintex propane control panel
- GE Profile Spacemaker II microwave oven
- SubZero Refrigerator with teak face
- SubZero combination refrigerator freezer with stainless steel face in stack by stairs
- GE Monogram trash compactor with teak face
- Double basin stainless steel sink with Grohe faucet
- Storage locker below sink
- Teak and spruce sole
- Opening portlight
- Forward storage lockers with sliding louvered doors
- Overhead storage locker with access doors
- Multiple storage drawers

PILOTHOUSE: Forward from the entry level you ascend a short flight of stairs up to the pilothouse. You can continue forward to the curved stairway that leads to the lower level. The pilothouse has two Dutch doors outboard for immediate deck access. Aft is watch berth (with slide out extension) and a settee that is fronted by fixed teak table. A Stidd helm chair provides a comfortable command perch. Key nav/com and ships operating equipment are mounted for a quick view and easy reach in the forward dash and overhead panels. The electrical breakers are labeled and protected. Additional refrigeration is provided by the Vitrifrigo drawers.

Nordhavn 43 Cayenne



Helm	Aluminum angled with turning knob
Helm chair	Stidd helm chair
Air Conditioning	Cruisair with DMX control
Settee	Upholstered with fixed teak table (2) drink holders Cover
Teak table	Fixed table with drink holders and cover
Watch berth	Upholstered with pull out to make wider
VHF	Icom IC M502
VHF Flybridge	Icom IC M506
Satellite phone	Iridium hand set (needs plan activation)
Satellite television	KVH
Autopilot 1 - primary	Furuno 711C
Autopilot 2 - back up	Simrad - AP22
Radar	Furuno DRS-Radome
Charting	Vector3D, Raster Datacore, Cmap, N.O.A.A. Mapmedia
Monitor	Furuno TZ Touch 15" display with screens for chart plotter, radar
Repeater	Furuno FI-50 Multi repeater

Nordhavn 43 Cayenne

GPS	(2) Furuno GP32 GPS WAAS Navigator
Wind and Depth	Furuno F1-50 analog Wind with digital read out for wind speed, depth and boat speed
Compass	Ritchie Powerdamp
AIS	Furuno AIS
Computer	Dell
Main engine	Lugger main panel with analog gauges and key
Engine controls	Morse cable dual lever controls
Wing engine	Yanmar panel with analog RPM and key T-handle controls
Hour meter	Wing engine analog hour display
Generator	Northern Lights start panel with analog gauges
Thruster	Side Power lever toggle control
Windlass	Maxwell remote toggle
Stabilizers	Naiad Multisea II stabilizer panel
Stabilizer cooling	Switch to activate cooling pump
Electrical breakers	Comprehensive Nordhavn breaker layout with digital displays and select switches
Inverter panel	Magnum with digital display
Battery monitor	Xantrex Link Pro digital display
Water maker	Village Marine remote panel
Chart drawer	Under table foot landing
CCTV	Remote cameras
Wipers	Imtra control pad
Horn	Air horn button
Bell	Wall mounted
Clock	Wall mounted
Barometer	Wall mounted
Stereo	Fusion 700 radio, CD Player and speakers
Printer	Canon MX870
EPIRB	ACR
Paperwork	Nordhavn manual, assorted systems and equipment binders
Fans	(1) Hella
Fire Suppression	Sea Fire display for engine room
Alarm - water in fuel	Racor alarm
Bilge pump counter	Aqualarm Digital counter
Refrigeration/Freezer	(2) Vitrifrigo stainless drawers

Nordhavn 43 Cayenne

The lower level has both staterooms and heads as well as access aft to the engine room.

GUEST STATEROOM: Located forward below the foredeck, this stateroom was custom ordered to sleep three in single berths. The forward head and shower includes a fresh water toilet and sink with medicine cabinet.



- Over / under single berth bunks to port
- Single berth to starboard
- Opening portlights port and starboard
- Overhead opening hatches with screens
- Teak and spruce soles with hatch access to tanks
- Raritan Atlantes electric fresh water toilet
- Y-valve for head
- Stand up stall shower with curtain
- Storage lockers
- Sink undermounted into granite counter
- Mirrored medicine cabinet with storage

OWNER STATEROOM: The owner stateroom is amidships with the bed turned athwartships. The head and shower are located to starboard. There are two hanging lockers and many drawers. The forward bulkhead has a large mirror. The floors are teak and spruce. The head has a large shower stall with bi-fold door, granite counter with sink and medicine cabinet and the fresh water toilet.

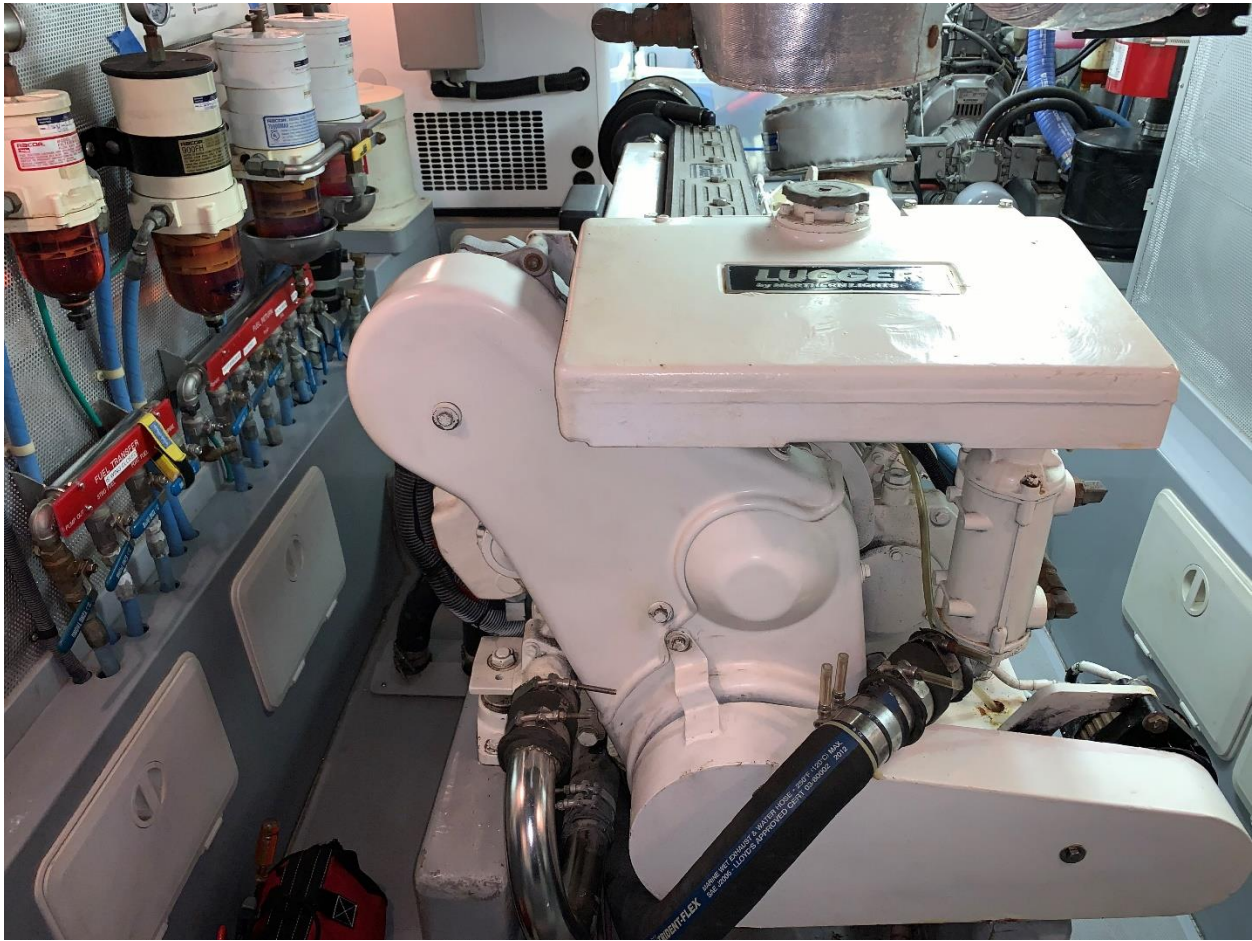
Nordhavn 43 Cayenne



- Island berth sleeps two
- Two portlights outboard
- Mirror on forward bulkhead
- Hanging lockers
- Night stands
- Assorted drawers
- Furuno repeater
- Raritan fresh water head
- Y-valve for head
- Stand up shower with bi-fold door
- Granite counters with undermount sink
- Holding tank level sensor
- Fresh water level sensor
- TV inoperable

ENGINE ROOM: The primary engine room access is through the teak faced door with viewing window aft in the owner cabin. The Lugger main engine is keel cooled with a dry stack exhaust. The outboard primary fuel tanks are fiberglass and have sight glasses. The Yanmar wing engine to port provides independent propulsion. The Northern Lights generator has sound shields. The fuel distribution is via a forward supply tank and uses manifolds and Racor fuel water separators.

Nordhavn 43 Cayenne



- Luggerr main engine – keel cooled, dry stack exhaust
- Yanmar wing engine with isolated aluminum fuel tank
- Northern Lights 8kW generator
- Naiad MultiSea II active fin stabilizers
- Bronze through hulls and strainers
- Sea Fire – fire suppression
- Electric bilge pump
- High water bilge pump

LAZARETTE: The lazarette houses the steering gear, watermaker, hot water tank, emergency tiller, air conditioners, batteries and inverter/charger. This is a large space that serves to store the extras most cruisers accumulate.

Nordhavn 43 Cayenne



- Village Marine water maker
- Magnum 3,000-watt inverter
- Xantrex 1,800-watt charger
- Seaward 11-gallon hot water tank
- Hynautic steering ram with valves
- House batteries
- Fuse panel
- Cockpit hatch locking mechanism

EXTERIOR SUMMARY

SWIM PLATFORM/COCKPIT: The cockpit (aft deck) has access from the extended swim platform and boarding doors on both sides. Each side of the cockpit has a full height boarding door with scupper flat at the base. This area has storage lockers and is trimmed with a varnished teak caprail.

- Custom swim step deck extension
- Deep reach swim ladder
- Cockpit hot / cold freshwater shower
- Large hatch access to lazarette below
- Freeing ports
- Hawse pipes for mooring lines
- Varnished teak cap rail
- Paravane fish storage sockets
- Fresh and sea water taps

Nordhavn 43 Cayenne

- Storage lockers
- Propane locker – vented overboard
- Rod holders
- Rod/boat hook storage racks overhead
- Barbeque mount (propane Magma BBQ)
- Step up to starboard side deck
- (3) Access gates to cockpit

SIDE DECK/PORTUGUESE BRIDGE: From the cockpit you can step up to the starboard side deck and transit up to the Portuguese bridge. The shore power connections are outside of the pilothouse. The Portuguese bridge deck has an access door to the foredeck and wraps around the front of the pilothouse continuing aft to reach the boat deck from steps on the port side

- Side deck with stainless rails along starboard side.
- Shore power connections
- Portuguese bridge provides a safe path forward of the pilothouse
- Hinged gate to foredeck

FOREDECK: The Maxwell windlass is atop a guttered anchor well with a Freeman hatch access to the chain locker below. There two deck hatches above the forward cabin and forward head. Two built in fiberglass storage boxes. Two dorade vents. The life raft is mounted to port.

- Maxwell VWC 3500 windlass
- 50 KG Bruce anchor
- 400' chain
- Freeman hatch
- Chain locker with shelves
- Two built in fiberglass deck boxes
- Dorade scoops for natural air ventilation into each cabin
- Life raft mounted on cradle

BOAT DECK: This is a large deck with tall stainless steel safety railings. The mast supporting the dry stack exhaust pipe runs up from the engine room through the muffler console. The boom is rigged with cables and blocks for dinghy launching and to position the paravane outriggers. The dinghy is mounted athwartships and is on a raised mount with room below for storing gear. The starboard side deck has been used for bicycle storage in the past (no bikes included mounts have been removed).

- Highfield 10.5 RIB with mounts and securing straps
- Honda 15 HP outboard
- Forespar mast and boom
- Electric boom winches in console
- Paravane outriggers with longer spreaders, rigging and water drag fish
- EPIRB

Nordhavn 43 Cayenne

FLYBRIDGE: Up a couple of steps on the port side of the boat deck you arrive at the flybridge. This upper deck has a folding Bimini top. There are two helm chairs side by side and a clever ‘jump’ seat between them and aft. From the starboard seat you can operate Cayenne – angled helm, autopilot, main engine controls, bow thruster, VHF radio and more. The forward console has access doors for storage.



Bimini	Stainless steel tubes, foldable, weather resistant blue cover
Helm chairs	(2) chairs Folding cushion seat
Helm	Aluminum angled with turning knob
Main engine	Lugger display with analog gauges Double lever Morse controls
Thruster	Side Power bow thruster toggle
Windlass	Remote toggle
Horn	Button
Compass	Ritchie
Stereo	Fusion with speakers
VHF	Icom IC-M506
Autopilot 1 - primary	Furuno 711C

Nordhavn 43 Cayenne

Autopilot 2 - back up	Simrad AP22
Monitor	FurunoTZ Touch 12" for radar and chart plotter
Charting	Vector3D, Raster Datacore, Cmap, N.O.A.A. Mapmedia
Repeater	Furuno F1-50 - wind, speed depth
Storage	Locker door access to large storage space forward of helm

SAFETY EQUIPMENT:

- US Coast Guard safety equipment (flares, fire extinguishers, discharge and trash plaques, horn, life jackets, throw ring, etc.)
- Sea-fire engine room fire system
- EPIRB mounted on boat deck
- Viking 4-person life raft mounted in cradle on foredeck

ADDITIONAL BROKER COMMENTS:

Cayenne is a US Coast Guard Documented vessel. **Cayenne** is loaded and ready to head right back out to sea. The current owners have done an exceptional job looking after her.



<https://www.youtube.com/watch?v=kmeNbnuW7Og>

Nordhavn 43 Cayenne



For additional information please visit *Cayenne's* website: www.Nordhavn43ForSale.com

Exclusions: Potential purchasers should assume that items on the vessel at the time of viewing, but not specifically listed on this sheet, are not included with the sale of the yacht. These specifications are believed to be true and correct but cannot be guaranteed. Items excluded include, but are not limited to Paintings, tools, handheld nav gear and binoculars. Owner's personal effects and clothing will be removed prior to closing.

Disclaimer: Jeff Merrill Yacht Sales, Inc. presents the details of this vessel in good faith but cannot guarantee or warrant the accuracy of this information nor guarantee or warrant the condition of the vessel. Buyers should instruct their agents and their surveyors to investigate all details the buyers desire validated. This vessel is offered subject to prior sale, price change, or withdrawal without notice.

Brokerage: JMYS is a US based (licensed and bonded yacht brokerage in California, Florida and Washington) with an international emphasis specializing in ocean capable trawlers and recreational tugs. Our brokers are experienced boaters, most are trawler owner/operators with thousands of hours and miles at sea. We treat our clients with respect, we are responsive and not pushy. Our focus is to become your loyal advocate, always looking out for your best interests. The team at JMYS has extensive trawler and motor yacht product knowledge and our skills are available for coaching after the sale has concluded.

Co-Brokerage: Fellow yacht broker association members: *Cayenne* is available for Co-Brokerage.

Jeff Merrill Yacht Sales, Inc. © 2021 All Rights Reserved www.JMYS.com

Nordhavn 43 Cayenne

***Listing broker. Jeff Merrill, CPYB** (Certified Professional Yacht Broker) has extensive product knowledge of the trawler market plus direct experience with the Nordhavn 43. He helped clients build several new 43's (Taiwan and China) during his 14 years with PAE and continues to be active in the Nordhavn brokerage market. Jeff is a familiar face to YouTube viewers and a regular presenter at TrawlerFest. He writes about trawlers for *Ocean Navigator* and *PassageMaker* magazines and is one of the online instructors for Boaters University.

This listing specification has been approved by the sellers for accuracy. The photos, images and descriptive content are copyrighted by JMYS and may not be copied or used without specific written permission. All inspections are by appointment only. Please contact listing broker, **Jeff Merrill, CPYB** by phone, text or email for additional information or to schedule your personal showing. Jeff is always available via Mobile (949) 355-4950 (call or text). You can send a detailed Email to: Jeff@JMYS.com.



Licensed and Bonded in California, Florida and Washington.

Skype: jeff.merrill | You Tube: Jeff Merrill Yachts | Twitter: @merrillyachts | LinkedIn: jeff.merrill
Facebook: Jeff Merrill Yacht Sales | Instagram: jeffmerrilljmys | Yacht Brokers Association of America |
International Yacht Brokers Association (Florida) | Northwest Yacht Brokers Association |
California Yacht Brokers Association – President 2015 and 2016

